



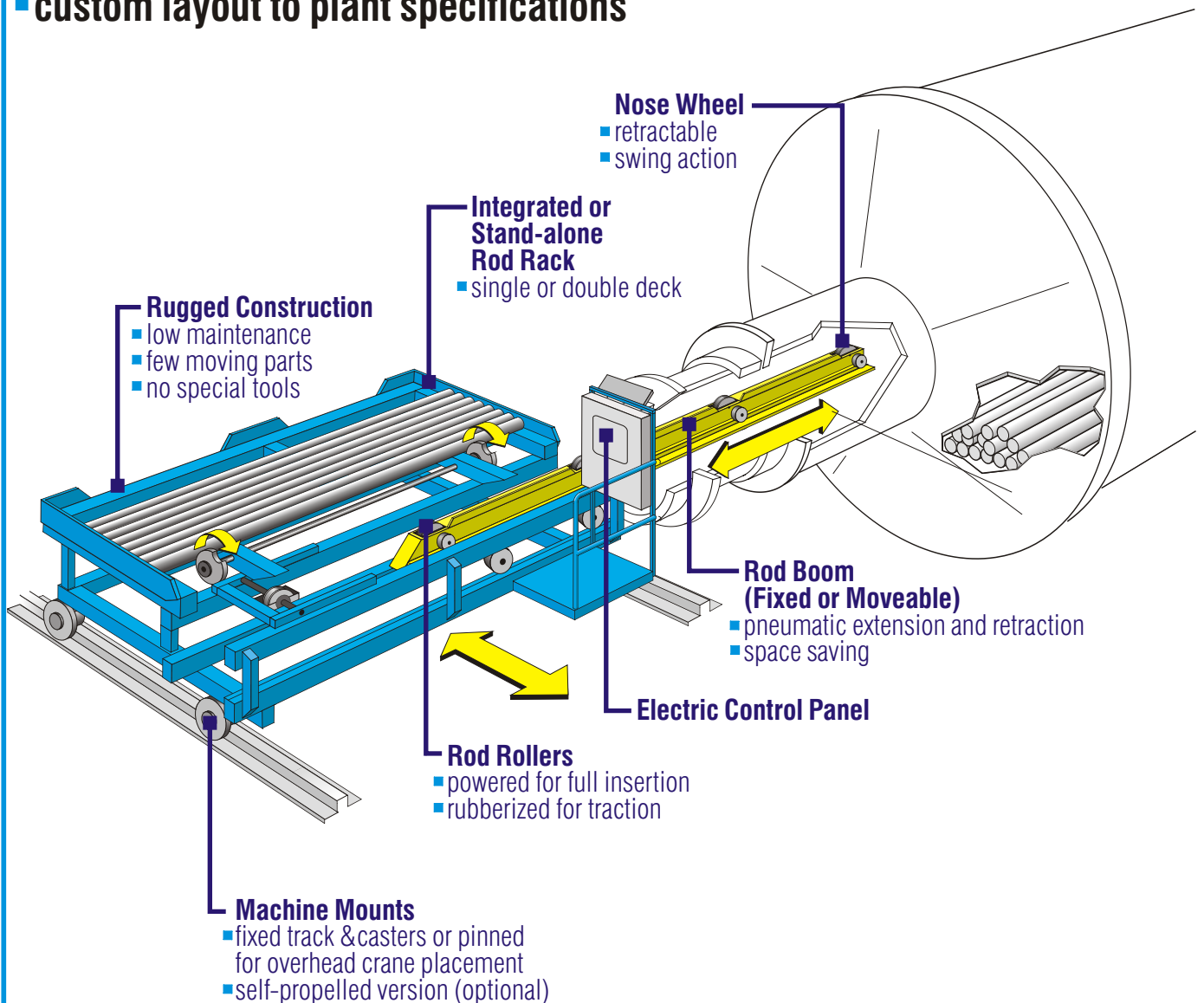
HEATH & SHERWOOD

# rod charger

## For Charging Grinding Rods Into Rod Mills

- built to suit various size grinding mills and varying lengths and diameter rods
- mechanized rod indexing to eliminate jamming of rods
- custom layout to plant specifications

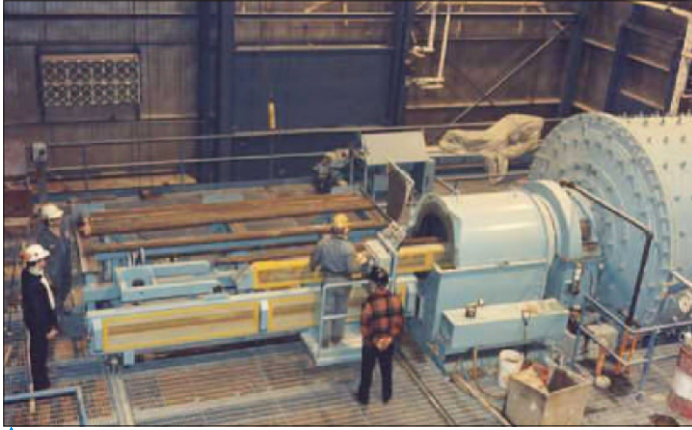
- minimum process interruption
- 30 seconds or less cycle time per rod
- no operator contact with rod
- few moving parts
- no special tools required



# rod charger



**We are the leader in rod charger manufacturing with over 45 units supplied world-wide.**



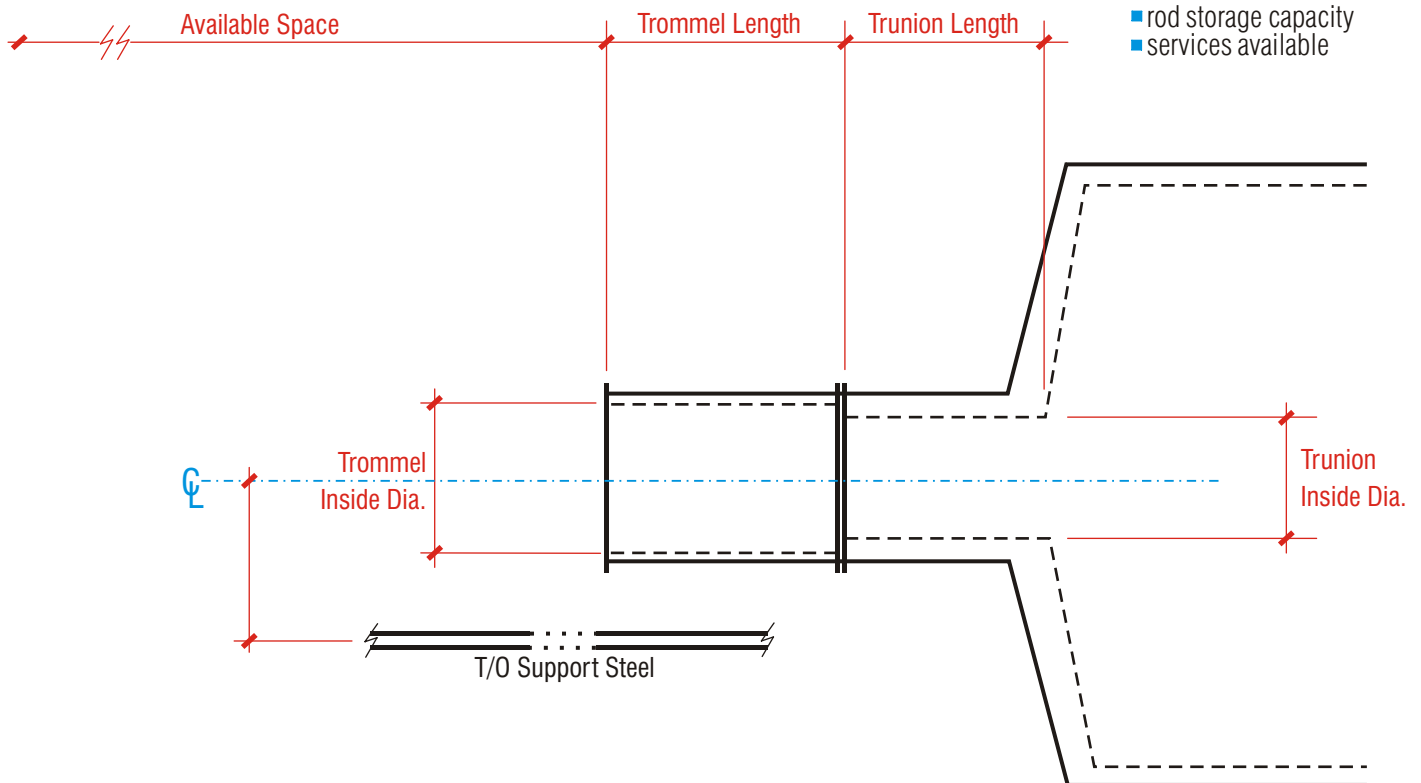
The rod charger layout is customized to plant specifications for any size rod mill and manufactured to suit unique rod charging requirements.



The rod charger with extendable boom moves rods safely inside the trommel/trunion before charging.

## Rod Charger Quotation Requirements

- rod mill diameter
- rod size
- rod storage capacity
- services available



**Heath & Sherwood (1964) Limited**  
 Box 340 Kirkland Lake, Ontario  
 Canada P2N 3J2

**Tel.** (705) 567-5313  
**Fax.** (705) 568-8545  
**Toll Free in North America:**  
 1 888-go sample (467-2675)  
**email:** info@heathandsherwood64.com

**Subsidiary Offices:**  
 Toronto, Ontario Canada  
 Agents World Wide

**Visit our website at:**  
[www.heathandsherwood64.com](http://www.heathandsherwood64.com)