

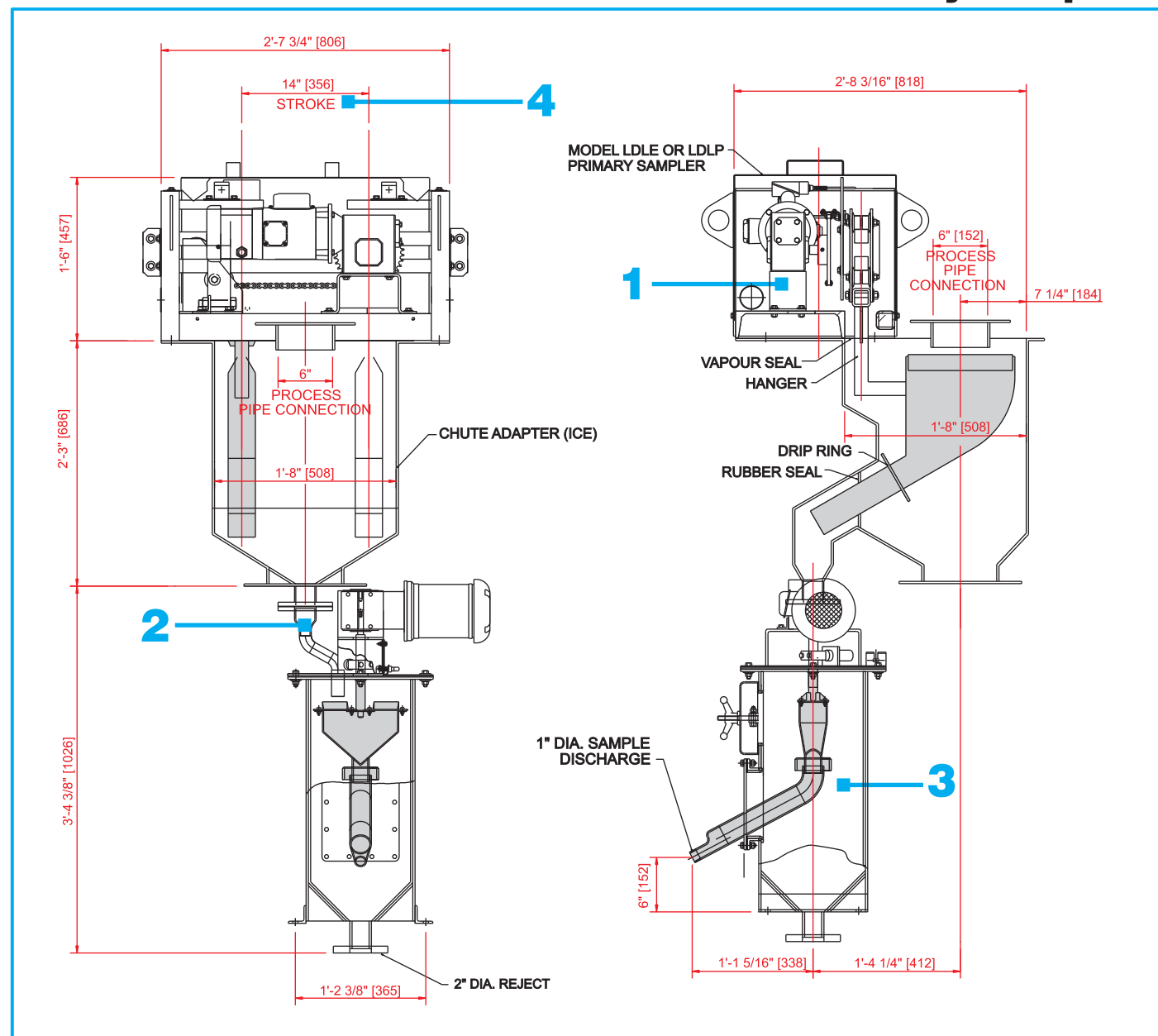
linear samplers

LDLE Light Duty Linear Electric



HEATH & SHERWOOD

Low Profile LDLE for Slurries with 4510 Secondary Sampler



- 1** primary sampler/low profile
 - adapts easily to plant layout
 - compact package for primary and secondary sampling
- 2** sample discharge launder connection direct to secondary sampler
- 3** Model 4510 secondary sampler
- 4** cutter stroke in various lengths up to 30 inches (14 inches shown)

Heath & Sherwood (1964) Limited
Box 340 Kirkland Lake, Ontario
Canada P2N 3J2

Tel. (705) 567-5313
Fax. (705) 568-8545
Toll Free in North America:
1 888-go sample (467-2675)
email: info@heathandsherwood64.com

Subsidiary Offices:
Toronto, Ontario Canada
Agents World Wide

Visit our website at:
www.heathandsherwood64.com



HEATH & SHERWOOD

linear samplers

Low Profile Light Duty Linear Electric

Economical Sampling of Low to Medium Flows for Metallurgical Accounting of Slurries or Solids

All HS Samplers Meet or Exceed Industry's Best Standards

Increase profits from important process streams with accurate sampling.

Typical applications where head room is a problem:

- vertical pipe or chute,
- final tailings,
- flotation feed,
- cyclone overflow

Electric Drive System- Model LDLE (Pneumatic Drive Available- Model LDLP)

- ensures uniform cutter velocity through the material stream
- non-reversing motors last longer

Vapor Seal

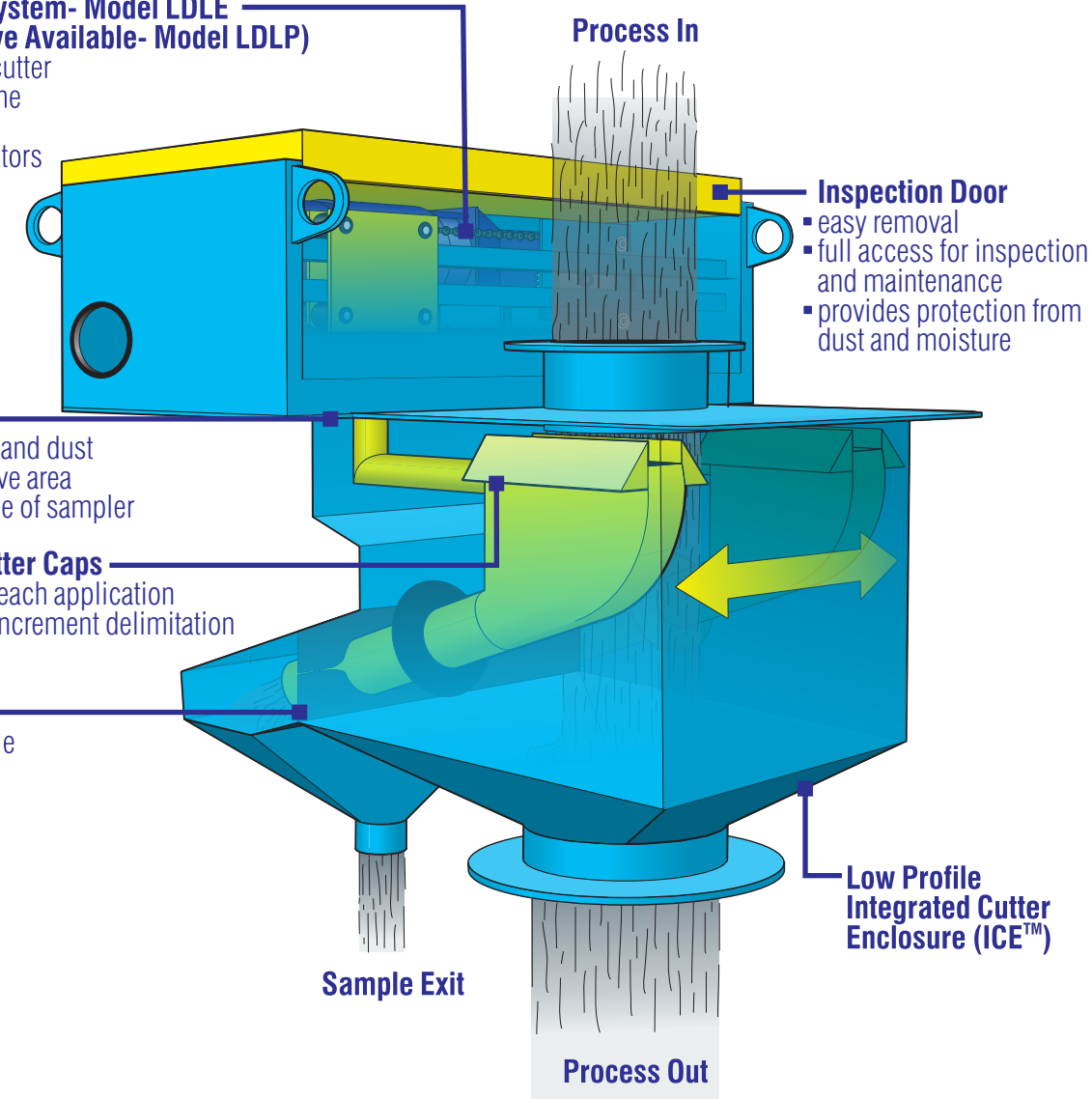
- minimizes vapor and dust from entering drive area through underside of sampler

Cutters and Cutter Caps

- designed to suit each application
- ensures correct increment delimitation and extraction

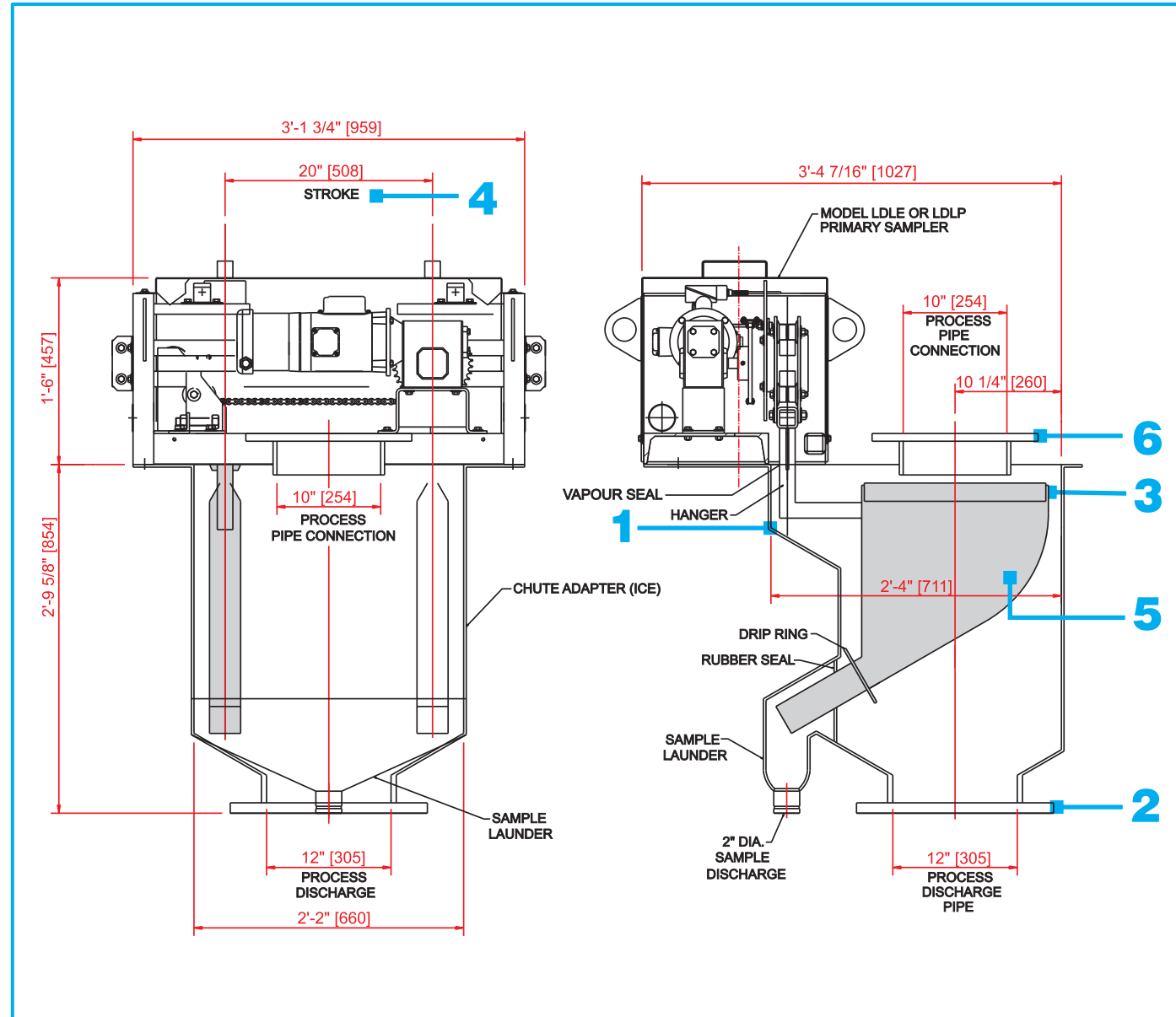
Rubber Seal

- eliminates sample contamination



LDLE-2 Printed in Canada

Low Profile LDLE for Slurries



1 low profile Integrated Cutter Enclosure (ICE™)
- adapts easily to plant layout

2 adapted for mounting on pump box, above mixing tank or other process equipment

3 cutter cap
- easily installed correctly
- molded polyurethane or stainless steel

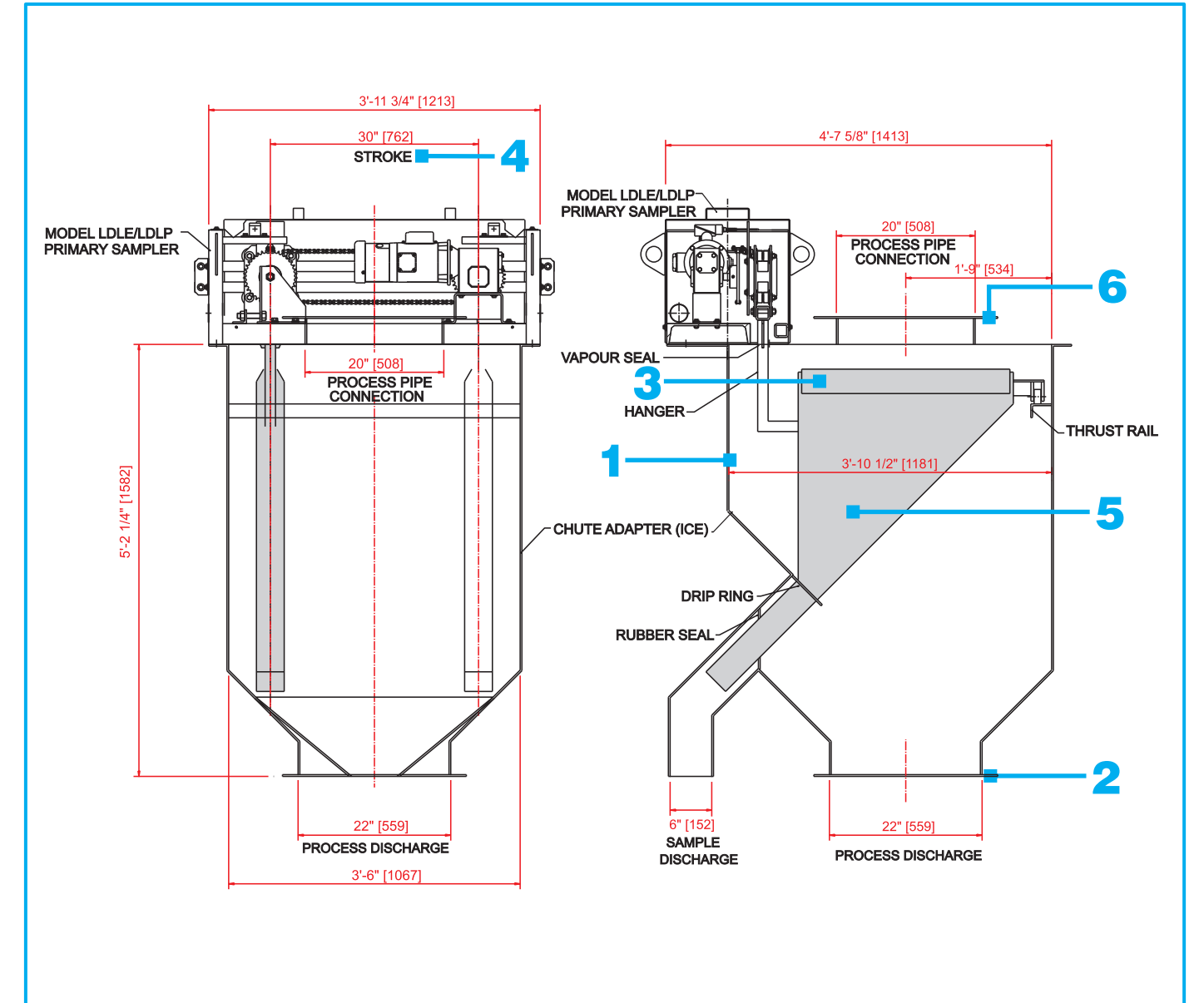
4 cutter stroke available in various lengths (20 inches shown)

5 cutter
- various materials of construction available depending on application
- 18 inch cutter shown

6 process connections from 4" to 24" (10" nominal inlet and 12" outlet shown with 150 lb flanges)

- standard electrical rating:
- 575 v/3ph/60 Hz (other ratings available)
- motor: up to 3/4 hp, 0.55 kW (standard)

Low Profile LDLE for Free Flowing Solids



1 low profile Integrated Cutter Enclosure (ICE™)
- adapts easily to plant layout

2 adapted for mounting in process chute, above feed hopper or other process equipment

3 cutter cap
- easily installed correctly
- molded polyurethane or stainless steel

4 cutter stroke available in various lengths (30" shown)

5 cutter
- various materials of construction depending on application
- 30 inch cutter shown

6 process connections from 4" to 24" (20" nominal inlet and 22" outlet shown)
- rectangular chute

- standard electrical rating:
- 575v/3ph/60 Hz (other ratings available)
- motor: up to 3/4 hp, 0.55 kW (standard)