

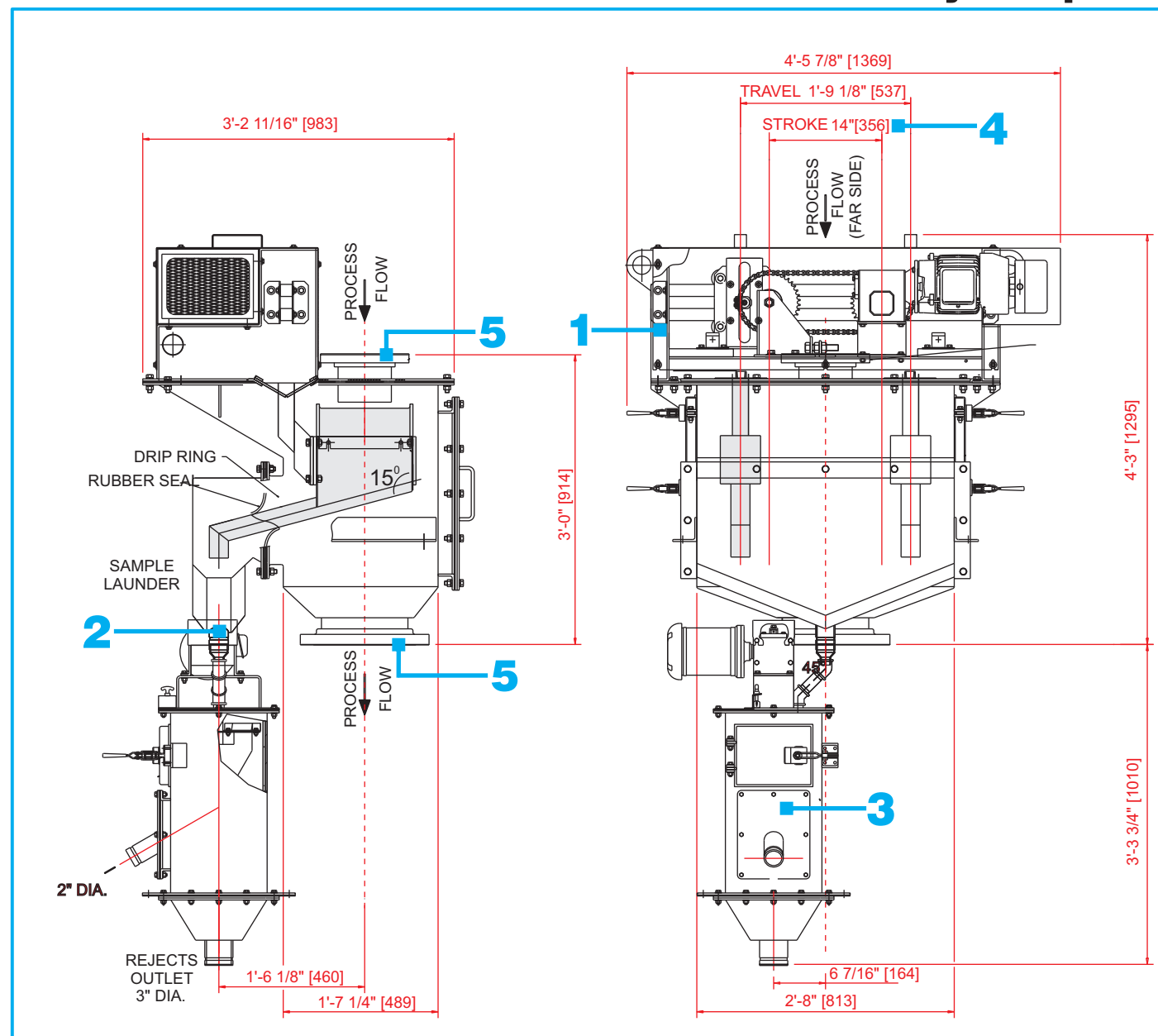
# linear samplers

LDLE Light Duty Linear Electric



HEATH & SHERWOOD

## Low Profile LDLE for Slurries with 4510 Secondary Sampler



- 1** primary sampler/low profile  
- adapts easily to plant layout  
- compact package for primary and secondary sampling
- 2** sample discharge launder connection  
direct to secondary sampler
- 3** Model 4510 secondary sampler
- 4** cutter stroke in various lengths  
up to 28 inches (14 inches shown)
- 5** inlets 4" to 20" dia., outlets 6 to 22" dia.

Heath & Sherwood (1964) Limited  
Box 340 Kirkland Lake, Ontario  
Canada P2N 3J2

Tel. (705) 567-5313  
Fax. (705) 568-8545  
Toll Free in North America:  
1 888-go sample (467-2675)  
email: info@heathandsherwood64.com

Subsidiary Offices:  
Toronto, Ontario Canada  
Agents World Wide

Visit our website at:  
[www.heathandsherwood64.com](http://www.heathandsherwood64.com)



HEATH & SHERWOOD

# linear samplers

Low Profile Light Duty Linear Electric

## Economical Sampling of Low to Medium Flows for On-stream Analysis and Metallurgical Accounting of Slurries and Free Flowing Solids

### All HS Samplers Meet or Exceed Industry's Best Standards

#### Continuous Electric Drive System- Model LDLE (Pneumatic Drive Available- Model LDLP)

- ensures uniform cutter velocity through the material stream
- non reversing motors
- intermittent and continuous operation

#### Vapor Seal

- minimizes vapor and dust from entering drive area through underside of sampler

#### Cutters and Cutter Caps

- designed to suit each application
- ensures correct increment delimitation and extraction

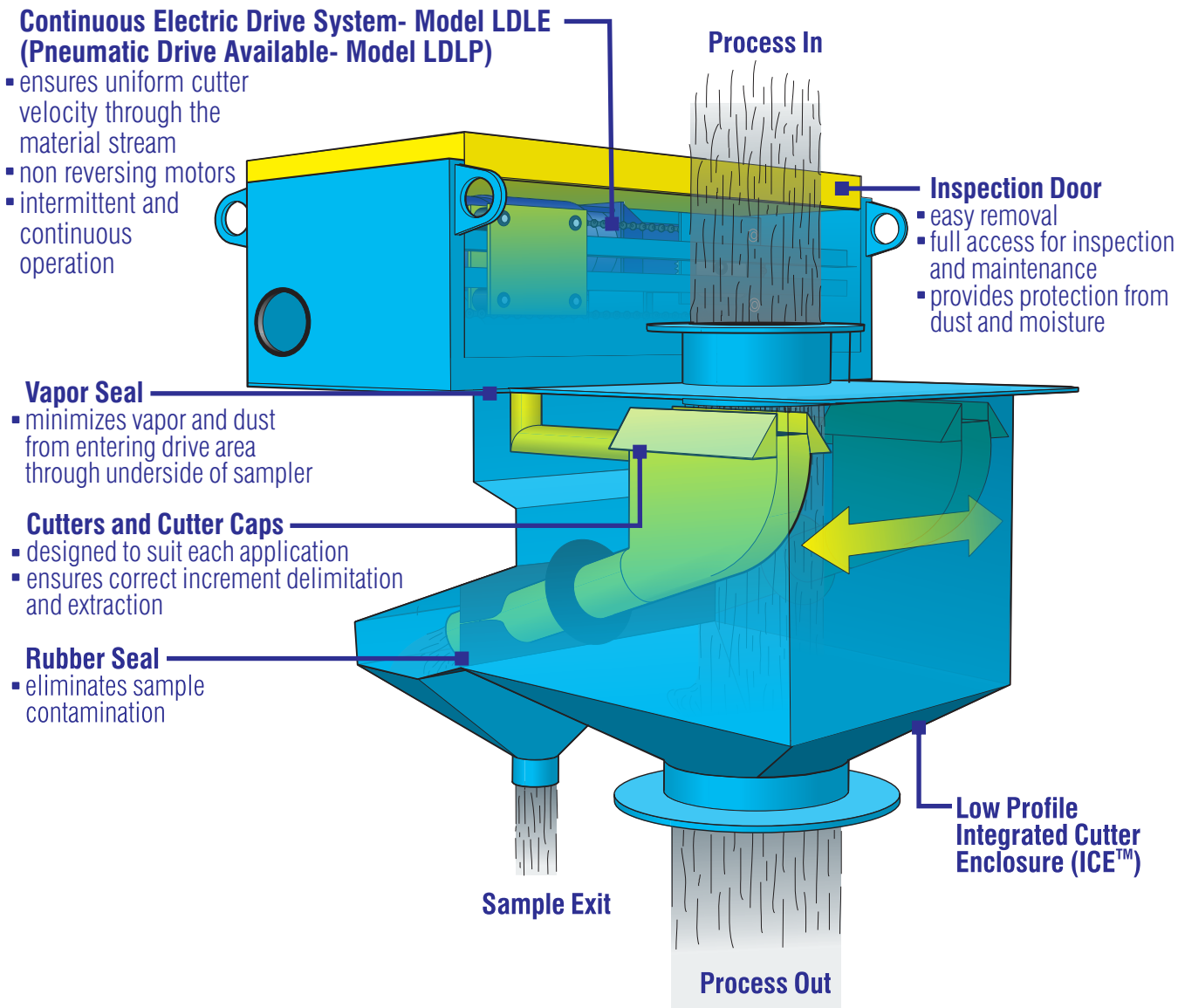
#### Rubber Seal

- eliminates sample contamination

Increase profits from important process streams with accurate sampling.

Typical applications where head room is a problem:

- vertical pipe or chute,
- final tailings,
- flotation feed,
- cyclone overflow



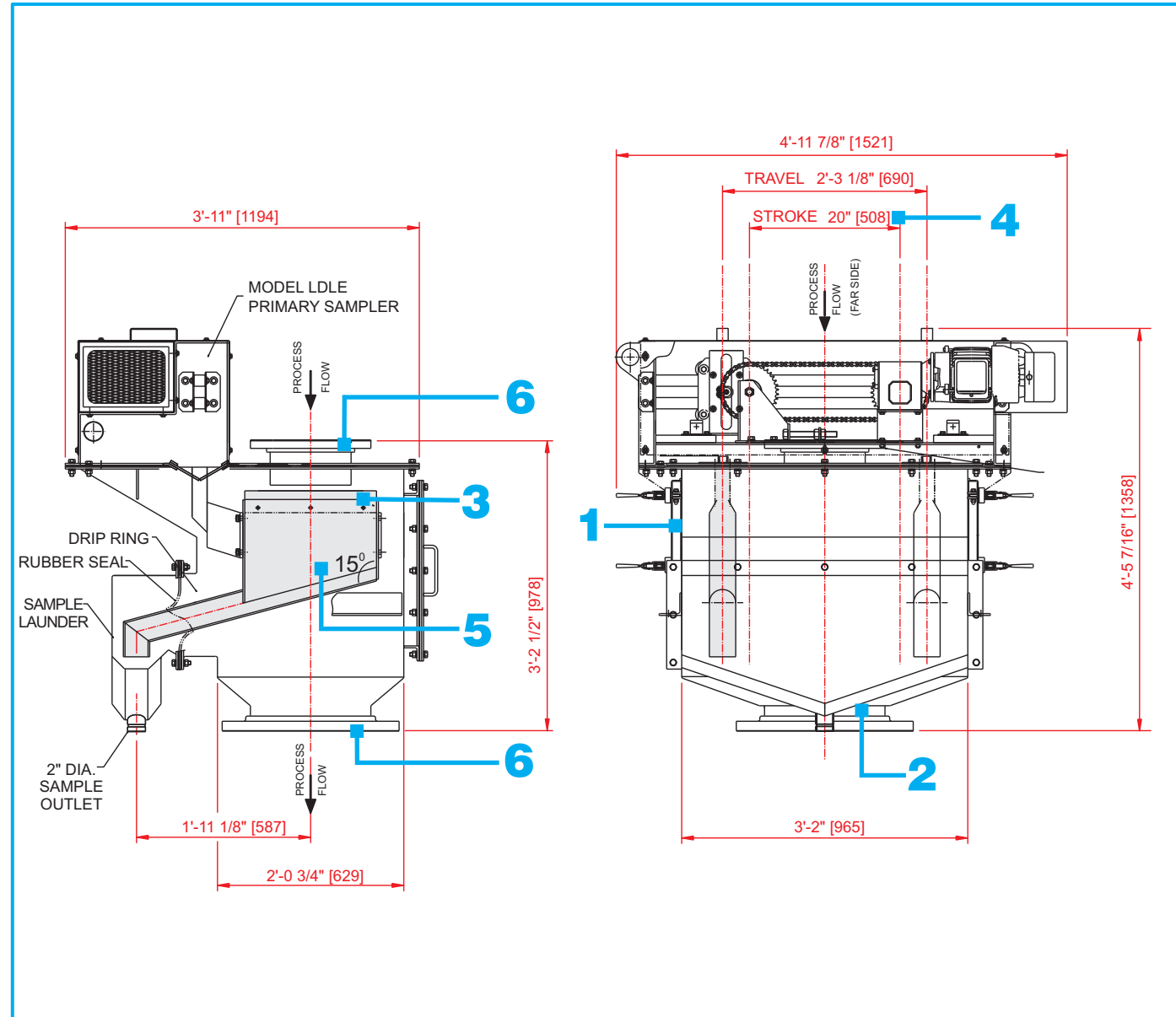
LDLE-3 Printed in Canada

# linear samplers

LDLE Light Duty Linear Electric



## Low Profile LDLE for Slurries



**1** low profile Integrated Cutter Enclosure (ICE™)  
- adapts easily to plant layout

**2** adapted for mounting on pump box, above mixing tank or other process equipment

**3** cutter cap  
- easily installed correctly  
- molded polyurethane or stainless steel

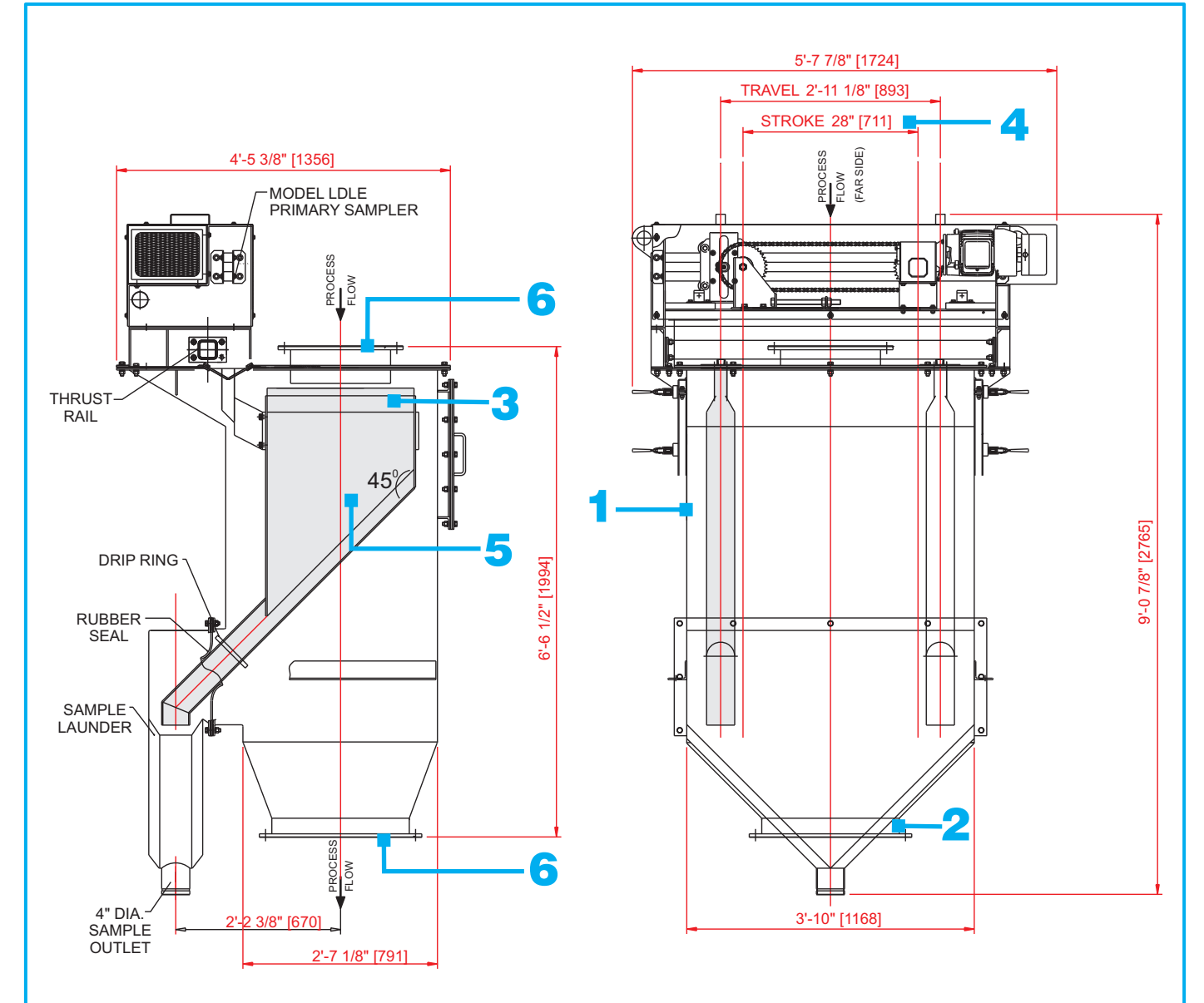
**4** cutter stroke available in various lengths (20 inches shown)

**5** cutter  
- various materials of construction available depending on application  
- 18 inch cutter shown

**6** inlet process connections from 4" to 20"  
outlet process connections from 6" to 22"  
- shown with 150 lb flanges  
- victaulic grooved pipe also available

- standard electrical rating:  
- 575 v/3ph/60 Hz (other ratings available)
- motor up to 3/4 hp, 0.55 kW (standard)

## Low Profile LDLE for Free Flowing Solids



**1** low profile Integrated Cutter Enclosure (ICE™)  
- adapts easily to plant layout

**2** adapted for mounting in process chute, above feed hopper or other process equipment

**3** cutter cap  
- easily installed correctly  
- molded polyurethane or stainless steel

**4** cutter stroke available in various lengths (28" shown)

**5** cutter  
- various materials of construction depending on application  
- for 1 1/4" maximum particle size  
- 24" cutter shown

**6** process connections from 4" to 20"  
(18" nominal inlet and 22" outlet shown)  
- rectangular chute

- standard electrical rating:  
- 575 v/3ph/60 Hz (other ratings available)
- motor up to 3/4 hp, 0.55 kW (standard)